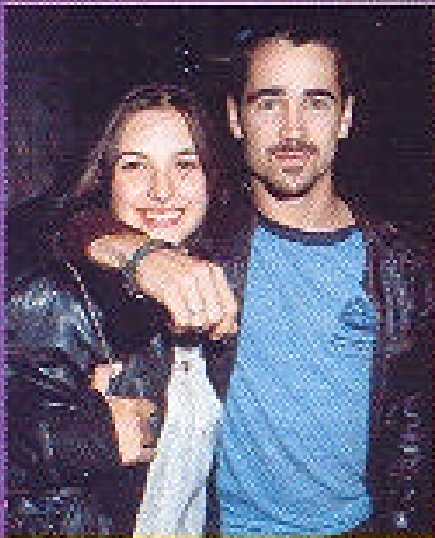




# Armed and Dangerous!

Body-language expert Patti Wood examines Colin's cuddles



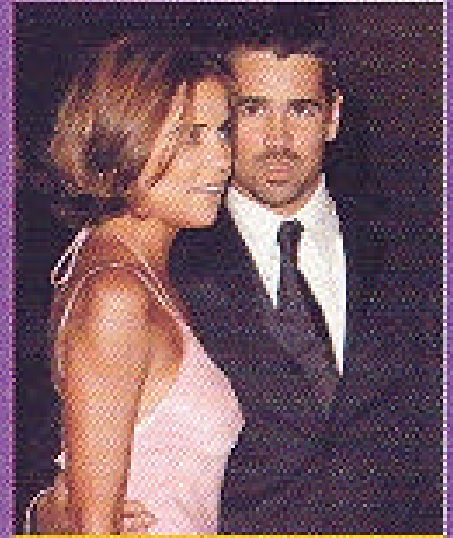
With ex-wife Amella Warner

"Colin's arm posture indicates a high ego and demonstrates ownership. He's showing her off. She's accepting of his attitude."



With Spears

"Again, Colin's arm is around the neck. It says, 'Isn't it cool that I got this babe?' She's uncomfortable with this forced pose. He's bragging."



With sister Claudine

"Here, he's being caring and respectful instead of displaying a conquest. She's interested in him, but he's more into the camera."

1 | FEBRUARY 17, 2003